



Inclusion Newsletter

Summer term update

This term, all staff are beginning to work on the area of transition—including pupils leaving the school, pupils new to the school and also pupils moving classes within the school, so that they are fully supported. Quite often, the children may not be aware of the strategies in place but staff are working behind the scenes!

All staff at Leechpool use the Learning Path to Success in classrooms when teaching all subjects. This means that sometimes your child may be experiencing a new activity, playing a game to learn the concepts, using the concept in their own work, editing their work to make it even better and then the final stage to help pupils really cement their learning is to teach it to their peers! This helps pupils articulate what they have learnt and embed it into their own knowledge and ensures profound learning. It is a bit like learning to ride a bicycle—we have to experience it first, play and practise lots, keep practising so that we do not fall off. Then we are ready to teach others.

Emma Payne

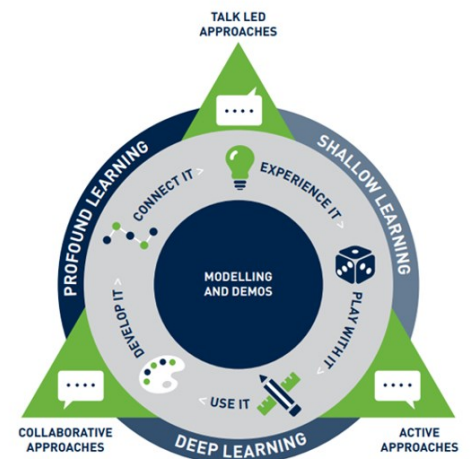


Leechpool Primary School

Summer Term
May 2024



Leechpool Primary
Learning Path to Success



A great opportunity for families to access some free counselling to talk through any worries or concerns that they may have. Launching this week!
Find out more [Ask a counsellor](#) | [Spurgeons](#)

LIVE
Monday 13th - Thursday 16th May
13:30-14:30 and 18:30-19:30
Friday 17th May
13:30-14:30

Free chat
with qualified counsellors

Ask a Counsellor

Have you noticed a change in your child's mood or behaviour?

Access our 20 minute live chat sessions with one of our qualified counsellors. Share your concerns. Receive free, immediate support and guidance*

Scan here for info

spurgeons.org/ask-a-counsellor

*Please note we can't offer legal advice, and we are not a crisis line. This service is for parents aged over 18.

Reminder

On our school website, on the Inclusion page, there is a button called **Additional Parent Support**—this has a range of website links to support families with different areas of need.